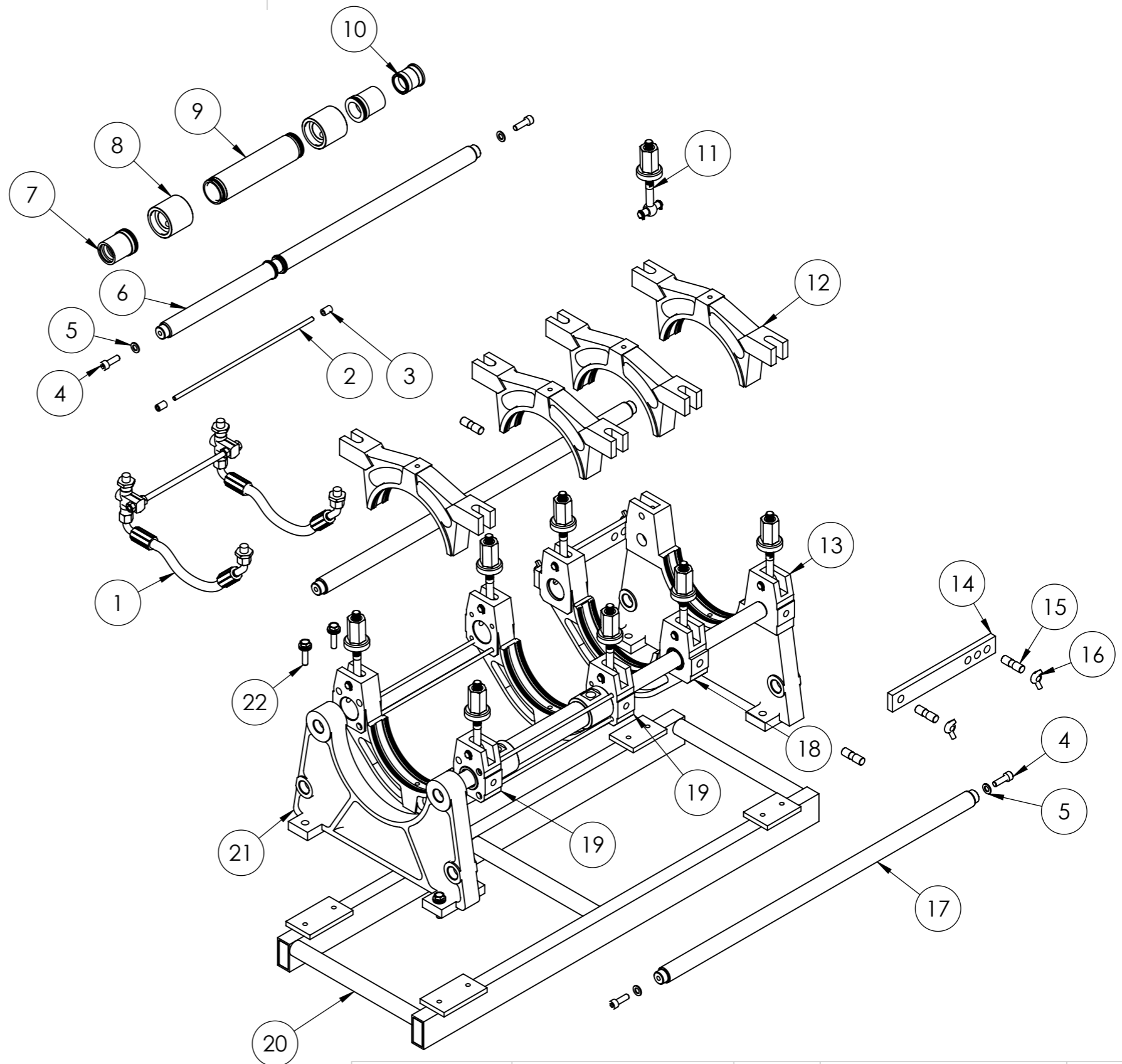


BOM Table		
ITEM NO.	DESCRIPTION	QTY.
1	Hydraulic Hose	2
2	Tie-Rod	8
3	Tie-Rod Nut	16
4	Cylinder Bolt	8
5	Cylinder Washer	8
6	Cylinder	2
7	Bush, Clamp 1/2	4
8	Cylidner Adapter	4
9	Cylinder Body	2
10	Bush, Clamp 3	2
11	Clamp Bolt	8
12	Top Clamp	4
13	Clamp 4	1
14	Spacer Bar	2
15	Spacer Bolt	6
16	Spacer Nut	4
17	Support Rod	2
18	Clamp 3	1
19	Clamp 1/2	2
20	Frame	1
21	Clamp Support	1
22	Frame Bolt	8



UNLESS OTHERWISE SPECIFIED: DIMENSIONS ARE IN MILLIMETERS SURFACE FINISH: TOLERANCES: LINEAR: ANGULAR:		FINISH: N/A	DEBUR AND BREAK SHARP EDGES	DO NOT SCALE DRAWING	REVISION
DRAWN SB		SIGNATURE	DATE	WORLDPOLY 2/5 Commercial Drive Lynbrook VIC 3975 Australia www.worldpoly.com	
CHK'D SB			13/04/2012	ABN 56092362260 Ph+61 (0)3 8795 3888 Fx+61 (0)3 8795 3887	
SOURCE: Assembly		MATERIAL: N/A		TITLE: WHD160	
		WEIGHT: 35 kg		DWG NO. WHD-000009-00	A3
		SCALE:1:7		SHEET 1 OF 1	